



DRILL 2 FRAC®

Data-Driven Insights to Maximize Your Well Efficiency



Reliable, actionable data is key to optimizing completion performance.

Drill2Frac transforms your existing drilling data to deliver high-value insight into near-wellbore rock properties through our proprietary RockMSE[®] rock-strength analysis and localized depletion identification.

OmniLog[®] correlative visualization brings together crucial near-wellbore data in a unified, high-resolution view of the well. This provides you with reliable, actionable intelligence to fine-tune completions and proactively reduce risks with stage-level precision.

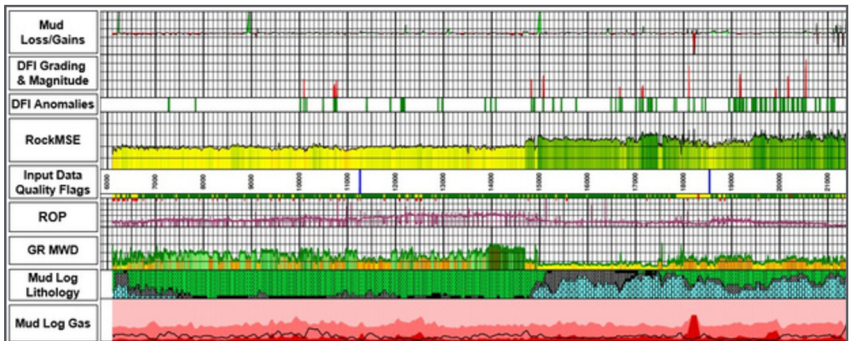
Additionally, our FlowFX[®] fluid-distribution model and PerfAct[®] design optimization show how design changes affect frac efficiency, treatment response, and potential for fracture-driven interactions.

Building on successes across every major U.S. basin, Canada, and Argentina, Drill2Frac continues to help operators plan optimized completions, mitigate frac hits and reduce other operational risks.

New Enhancements & Greater Insights

Our expanded capabilities are powering deeper near-wellbore interpretations with more actionable subsurface data:

- **Higher-Resolution Log:** RockMSE® near-wellbore data expands your data-interpretation capabilities with more granular geological detail.
- **OmniLog® Enhancements:** Our correlative data-log visualization now includes Mud Loss/Gains and Rate of Penetration (ROP) data tracks alongside RockMSE, gamma ray, lithology, mud gas and more.
- **Geological Vertical Projection:** Transposes horizontal log data to a vertical projection – to provide increased visibility into stratigraphic changes in rock properties.
- **4D Visualization:** Interactive HTML now features a timeline that enables you to view area development and well status over time.
- **Unique Well Trajectories:** Growing experience processing near-wellbore data in various trajectories, including U-turn wells. Our data and application values hold strong in unique well scenarios.

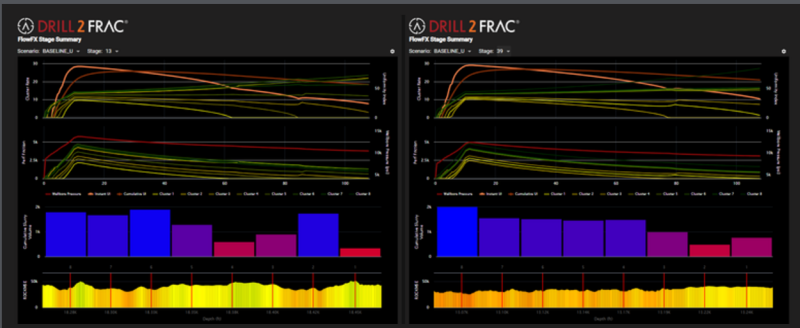


OmniLog Correlative Data Visualization

Optimized Completion & Geometric Design

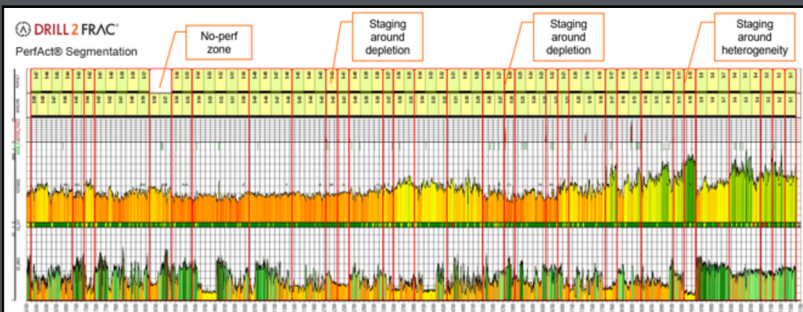
Our completion design tools and evaluation platforms help engineers confidently plan for optimal completions and mitigate risk prior to frac execution:

- **FlowFX® Near-Wellbore Fluid Distribution Simulator:** Compares multiple completion designs (geometric or optimized) in just minutes to predict the impact of near-wellbore properties and varying design parameters to frac efficiency and well uniformity.



FlowFX Simulation

- **PerfAct® Design Optimization:** Supports both geometric design optimization (stage placement relative to wellbore heterogeneity) and full optimization (stage and cluster placement to near-wellbore rock properties).

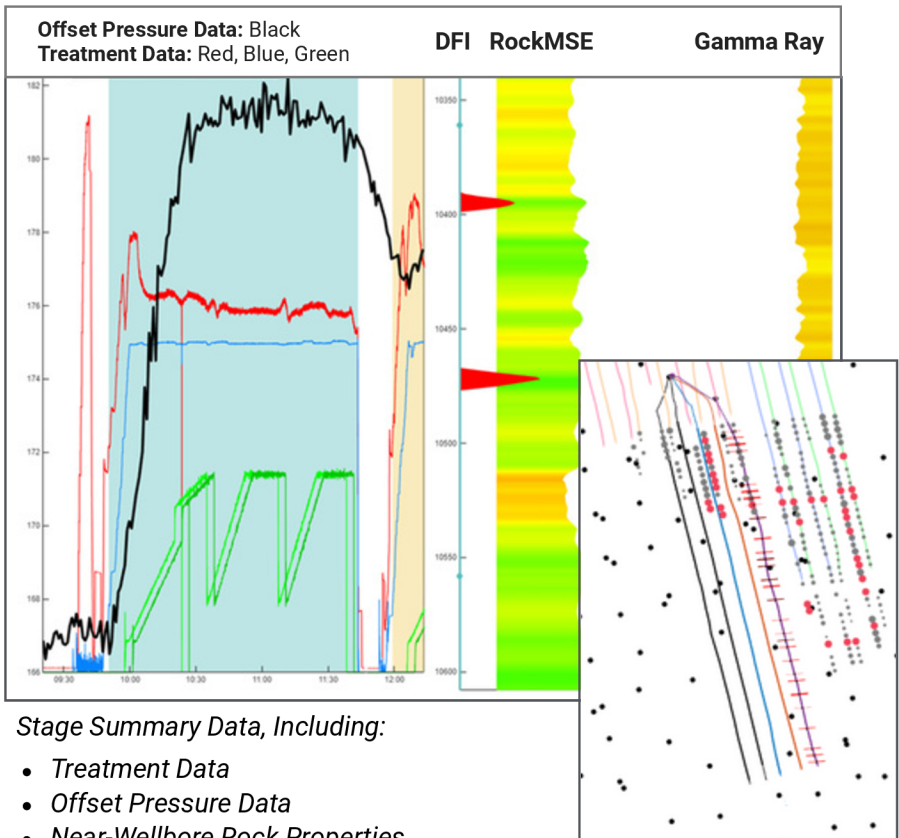


PerfAct Design

Advanced FDI Interpretation & Risk Mitigation

Strengthening your ability to evaluate fracture-driven interactions (FDIs) – new multidata visualizations are key in FDI interpretation to proactively reduce risk:

- **Offset-Pressure Data Integration:** Enhances visibility and evaluation of parent-child communication dynamics.
- **Localized Depletion Data:** Highlights vulnerable areas of FDIs along the wellbore, enabling proactive risk mitigation and providing insights into well spacing and stacked formations' impact on well-to-well communications.



DFI + Offset Pressure

NO TOOL, NO RISK

NO OPERATIONAL DOWNTIME

QUICK TURNAROUND TIME

PROVEN RESULTS & ROI

COLLABORATIVE TEAM OF EXPERTS

COST-EFFICIENT DATA & ANALYSIS



Ready to boost well
performance and
efficiency?

We're here to help:
info@drill2frac.com